

Beyond 2025 Southland and Energy

Energy and Innovation Wānanga

23 - 24 May 2023



BEYOND 2025
SOUTHLAND
Regional Long Term Plan

He ara whakamua, he ara hou a Murihiku i tēnei ao hurihuri

Moving forward, new pathways for Southland Murihiku in a constantly changing world

What is Beyond 2025 Southland?

Beyond 2025 Southland is our region's long term plan that will be presented in June 2023.

This piece of work had a dual purpose as:

- a. a workstream within Southland's Just Transition Work Plan, providing a long term lens over the other workstreams and;
- b. an update to the Southland Regional Development Strategy 2015 - 2025 (SoRDS).

200+ Businesses from around the region directly consulted to gain insights on their challenges and opportunities

100+ Presentations to community groups, organisations, businesses, iwi and agencies around the region

20+ Hui with mana whenua representatives and maata waka to ensure Māori perspectives included

20+ Separate pieces of research facilitated as inputs into the process

16 Workstreams established to inform the plan

9 Public roadshow events held around the region

6+ Separate surveys to understand community views and gain insights on key topics

4 Advisory or working groups established to deliver specific outcomes identified in the workstreams

2 Existing regional strategies reviewed as part of this process

1 Website with general feedback form www.beyond2025southland.nz

He ara whakamua, he ara hou a Murihiku i tēnei ao hurihuri

Moving forward, new pathways for Southland Murihiku in a constantly changing world

Guiding Principles

As we've looked at how to achieve the vision through the development of this plan, we've been guided by five principles.

Te Tiriti o Waitangi

We honour the principles and spirit of the Treaty by working collaboratively with our Treaty partners to ensure aspirations for mana whenua and Māori are reflected.

Inclusivity

We've understood that the process to develop the plan is just as important as what the plan says. So, we've endeavoured to provide opportunities for many to be involved and share their views with significant surveying, research, hui and conversations over the past 18 months.

Equity

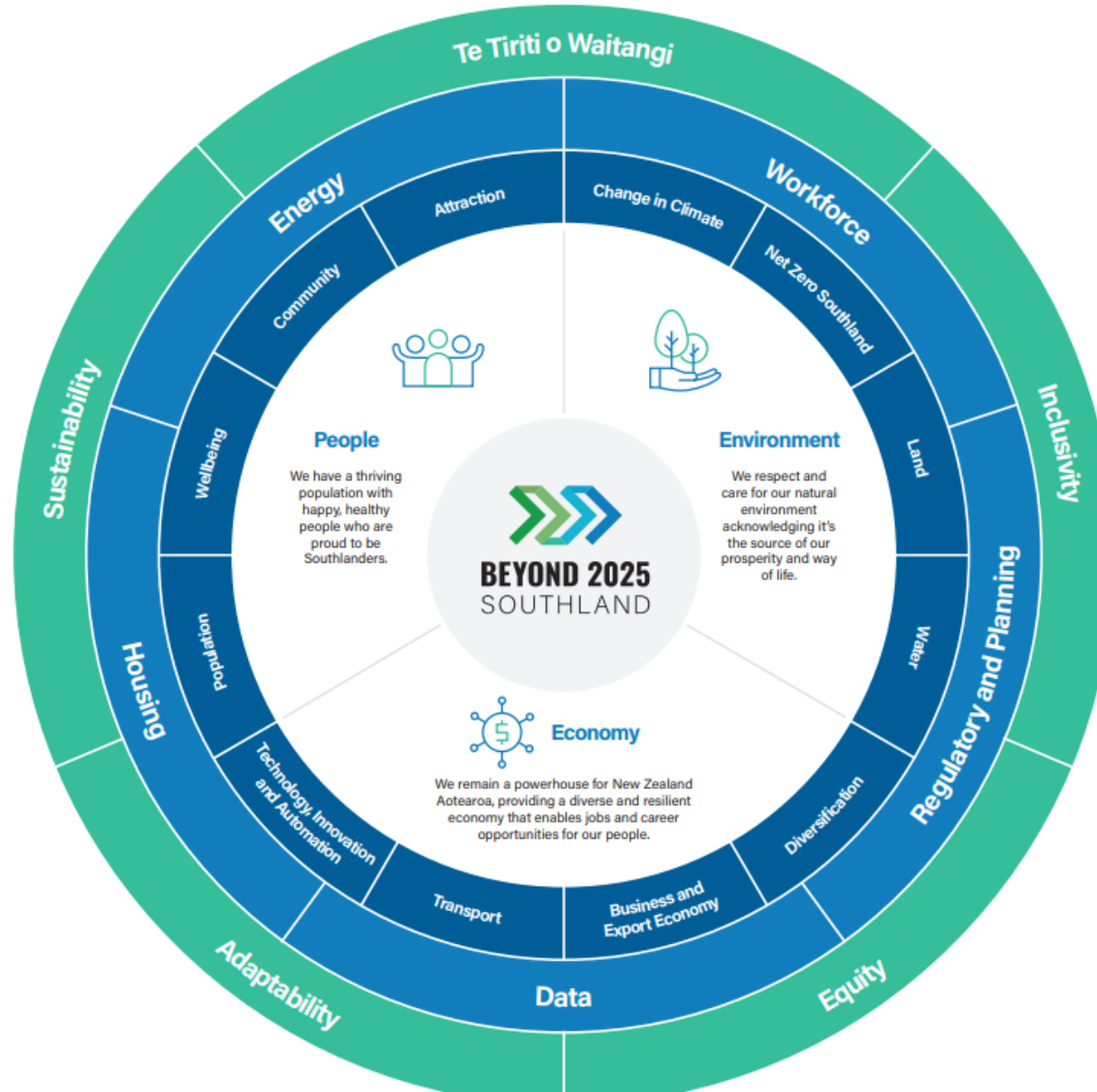
We've focussed on achieving equitable and fair outcomes, taking into account the needs and perspectives of all members of the community so that everyone, regardless of background or circumstance, have the opportunities to thrive.

Adaptability

We're acknowledging what we do (or don't do) now will affect the future so we need to ensure we are both resilient and adaptable in our approach. This way we can best respond to change and challenges considering things we can and cannot control.

Sustainability

We've focused on a sustainable long-term view for the region, ensuring there is balance between our people, our environment, and our economy now and for the future.



Key Enablers

Five key enablers have emerged as essential gamechangers. We need to prioritise and focus on these as they will allow other parts of the plan to happen.



Housing

We will support and enable the development of quality housing within the region to better meet the needs of our people.



Workforce

We will implement a joined-up approach to labour market planning so we all clearly understand what our skilled workforce shortages are now and into the future and how we will work collaboratively together to address them.



Data

We need access to timely, comprehensive, and accurate data to inform policy, assist decision-making, and prioritise resources for growth and development via collection, analysis, visualisation and data governance.



Energy

We will support the region's future energy needs in a clean and resilient way, while ensuring affordability for our communities and remaining globally competitive for new industry.



Regulatory and Planning

We want to align our regional development aspirations with the rules that dictate what we can and cannot do with our land, water and people, and we want rules that enable a prosperous and sustainable future for Southland Murihiku.

Energy



BEYOND 2025
SOUTHLAND

Regional Long Term Plan



“We will support the region’s future energy needs in a clean and resilient way, while ensuring affordability for our communities and remaining globally competitive for new industry”

Energy

It's a bigger conversation than if Tiwai closes or not.

Beyond 2025 Southland identifies possible futures for the region and associated energy implications alongside our net zero aspirations and in a changing climate.

This means we are as prepared as possible to embrace change and opportunities.

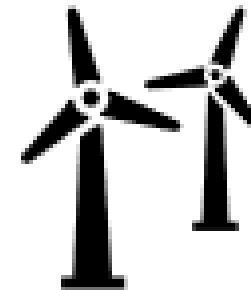
**Market
Leadership and
Community
Engagement**



**Policy
and
Planning**



**New Generation
and
Renewable
Energy**



**Support
Implementation of
the Southland
Murihiku Regional
Energy Strategy
2022 - 2050**

